

3M DI-NOC™ Architectural Finishes

Standard Products

Premium Wood

Dry Wood

Fine Wood

Wood Grain

Metallic Wood

Metal

Leather

Suède

Textile

Stone

Concrete

Mortar

Solid Color

Carbon

Functional Products

Whiteboard Film

Abrasion Resistant

Exterior

2026 Quick Ship Patterns

**Want
Samples?**



Material Bank

**Want
Samples?**



3M Site

Questions?



[www.3M.com
/AMD](http://www.3M.com/AMD)

Reimagine spaces with material science + design

Deliver design flexibility and peace of mind by designing with industry-leading, science-based solutions. With 3M™ DI-NOC™ Architectural Finishes, you're specifying best-in-class quality, durable surface solutions that are on-trend, and budget-friendly.

Want Samples?



Material Bank

Want Samples?



3M Site

Questions?

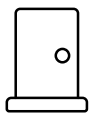


www.3M.com/AMD



Top Applications

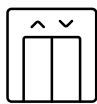
See applications by segment in back of brochure



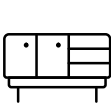
Doors



Walls / Ceiling



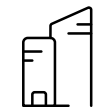
Elevators



Millwork / Built-ins



Restrooms



Exterior Facades

Top Product Benefits



Design Flexibility

Select from 900+ architectural finishes, more than layer, die-cut or customize a variety of films to meet your design needs — the possibilities are endless.



Remodel and Reuse

By refreshing rather than replacing existing surfaces, you can help reduce landfill waste and obtain LEED credits — for beautiful designs you can feel good about.



Quick Installation

Reimagine almost any surface with 3M™ Films installed quickly and easily by certified 3M installers and create less downtime, noise and disruption for your clients.



Cost-effective

3M surface finishes are a cost-effective alternative to traditional construction materials, allowing you to leave your design signature on a project.



Easy to Clean & Maintain

You're designing for durability with surfaces that repair easily and stand up to commonly used cleaners without degradation.



Meet Specifications

We demonstrate our commitment by providing third-party test results when applicable to one of our products.

2026 Quick Ship Patterns

These trendy patterns were selected to have readily available inventory in your local market for faster response to your project needs.



Order completed
Shipped from
Distributors



Targeted Site Arrival
≤ 5 business days

Contact your local 3M distributor or 3M sales representative to learn more about this program and availability of specific patterns for your project.

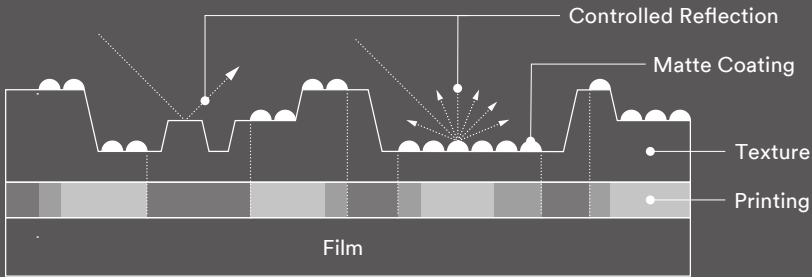


Not seeing patterns that work for your project?
There are an additional 700+ patterns.*
Scan the QR code to learn more!

* For projects requiring >5 rolls, or not listed in this sample deck, longer lead times will apply.



Premium Wood - PW



The Premium Wood Series expresses the realistic appearance and texture of natural wood. The controlled reflection of the matte coating technology is combined with both fine and deep wood grain embossing and high-quality printing. This unique technology creates the optimum tone and texture of each species of wood.



PW-2305MT



PW-2306MT



PW-2307MT



PW-2314MT



PW-2319MT



PW-2316MT



PW-2310MT



PW-2312MT



PW-2325MT

Dry Wood - DW

Fine Wood - FW



DW-1883MT



DW-2202MT



DW-2478MT



DW-2197MT



FW-886



FW-1122
 FW-1122AR
 FW-1122EXR* / FW-1122EX**



FW-1262



FW-1129
 FW-1129AR
 FW-1129EXR* / FW-1129EX**



FW-1256



FW-1293



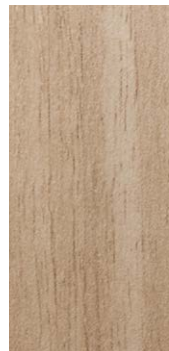
FW-237



DW-1878MT



DW-2208MT



DW-2203MT



DW-2221MT



FW-1022
 FW-1022AR
 FW-1022EXR* / FW-1022EX**



FW-1021



FW-1805



FW-1257



FW-1972



FW-1272



FW-236
 FW-236AR
 FW-236EXR* / FW-236EX**



DW-1877MT



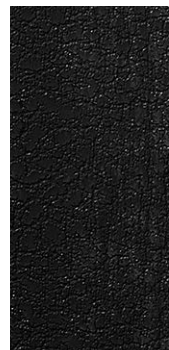
DW-1891MT



DW-1882MT



DW-2229MT



FW-1757



FW-627



FW-1801



FW-1113



FW-1215



FW-2421



FW-1138

* New version: Scheduled to be launched once the previous version is depleted.

** Previous version: Due to slight design differences before and after the model change, please do not mix and use the previous and new versions on the same surface.

AR series: for high traffic applications

EXR* / EX** series: for exterior applications

DO NOT apply to 3D compound curved surfaces

Wood Grain - WG

Metallic Wood - MW



WG-7024



WG-1841



WG-943



WG-865



WG-831



WG-1142



WG-1358



MW-777



WG-1704



WG-695



WG-1140
 ■ WG-1140AR
 ■ WG-1140EXR* / WG-1140EX** ⊗



WG-1337



WG-1837



WG-1143



WG-1141



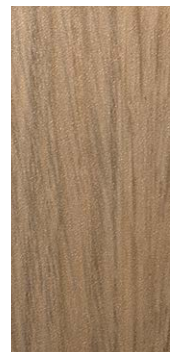
WG-156



WG-1196



WG-1708



WG-1710



WG-1838



WG-1336



WG-1067



* New version: Scheduled to be launched once the previous version is depleted.
 ** Previous version: Due to slight design differences before and after the model change, please do not mix and use the previous and new versions on the same surface.

■ AR series: for high traffic applications ■ EXR* / EX** series: for exterior applications ⊗ DO NOT apply to 3D compound curved surfaces

Metal - ME / RT / VM



ME-1175 ME-379 ME-1781 ME-396 VM-305 ⊗ ME-1224 ME-1434 ME-1435 ME-1997 ME-1223 ME-486



RT-1827 ME-1685 ME-1174 VM-1487 ⊗ VM-1694 ⊗ ME-2173 ME-904 ME-2271 ME-1716 ME-1466 ME-2265



ME-2552 RT-1111 VM-2361 ⊗ ME-2564 ME-2262 VM-1691 ⊗ VM-2035 ⊗ ME-2559

⊗ DO NOT apply to 3D compound curved surfaces

Metal - ME

Leather/Suède - LE/SU Textile - NU



ME-2264



ME-432



ME-2172



ME-2554



LE-1105



LE-1109



LE-1171



NU-1940MT



NU-1786



NU-1789



NU-2009



ME-2023



ME-2020



ME-2551



ME-2562



LE-1551



SU-2233MT



SU-2231MT



NU-2008



NU-1935MT



NU-2175MT



NU-2176MT



ME-2024



ME-2261



NU-2178



NU-1934MT



NU-2177

Stone - ST

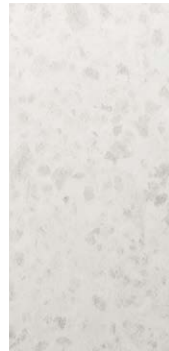
Concrete / Mortar - CN / AE / FA



ST-1831



ST-1914MT



ST-1918MT



CN-1621



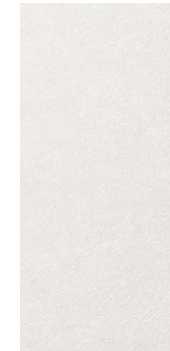
CN-1622





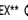
CN-1623



AE-2149

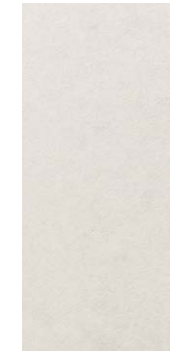


AE-1632

 AE-1632AR
 AE-1632EXR* / AE-1632EX** 



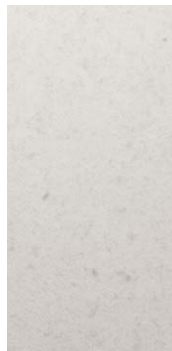
AE-1634



AE-1637



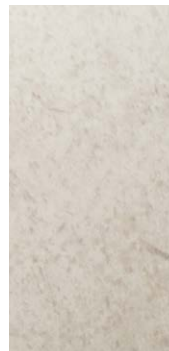
AE-2160



ST-1911MT



ST-2533MT



ST-2170MT



AE-1913MT



AE-1717



AE-1638



AE-2162MT



AE-2503



AE-2163MT



AE-2164MT



AE-2159



ST-2171MT



ST-2536MT



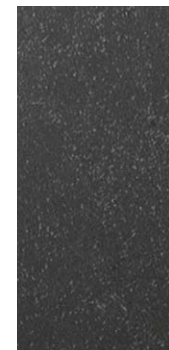
AE-2506



AE-2153MT



AE-1944MT



AE-1921MT



AE-1633



AE-1636




AE-1719




FA-1531

* New version: Scheduled to be launched once the previous version is depleted.

** Previous version: Due to slight design differences before and after the model change, please do not mix and use the previous and new versions on the same surface.

 AR series: for high traffic applications

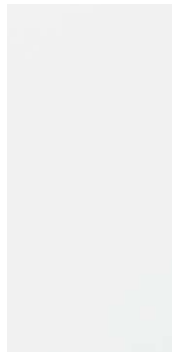
 EXR* / EX** series: for exterior applications

 DO NOT apply to 3D compound curved surfaces

Solid Color - PS / HG

Carbon - CA

Whiteboard Film - WH



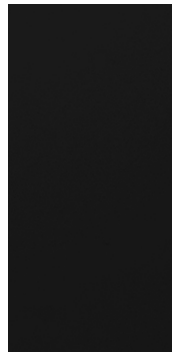
PS-3989MT



PS-3093MT



PS-504



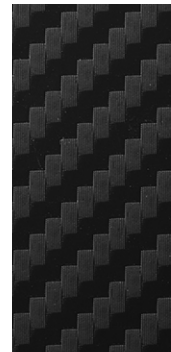
PS-1870MT



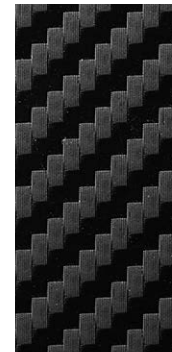
PS-3870MT



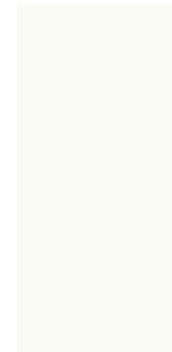
CA-420



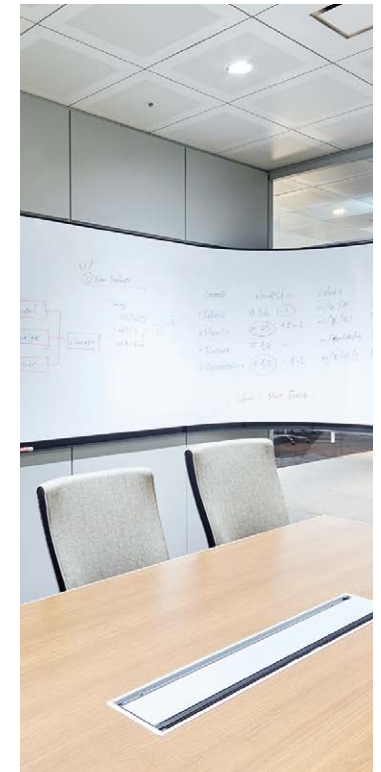
CA-421



CA-1170



WH-111



⊗ DO NOT apply to 3D compound curved surfaces



PS-503



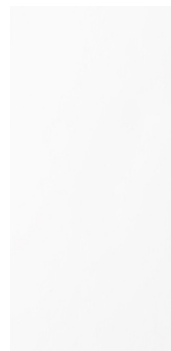
PS-1187



PS-3866MT



PS-3098MT



HG-1205



PS-3098MT

Abrasion Resistant - AR & Exterior – EXR* /EX**



* New version: Scheduled to be launched once the previous version is depleted.
 ** Previous version: Due to slight design differences before and after the model change, please do not mix and use the previous and new versions on the same surface.
 *** This item will be discontinued once the stock is depleted.

Standard and Functional series (AR and EX) have a similar appearance but are not identical.

[AR] AR series: for high traffic applications [EXR* /EX**] EXR* /EX** series: for exterior applications ⊗ DO NOT apply to 3D compound curved surfaces

Common uses for DI-NOC but not limited to these alone.



Retail / Banking



Hospitality




Healthcare




Food Service



Office


 <p>Doors</p>	Fitting Rooms / General	Guest Room / Bathroom / Closets	Guest Room / Bathroom / Hallways	Access / Bathroom	Offices / Bathrooms / Conference Rooms
--	-------------------------	---------------------------------	----------------------------------	-------------------	--

 <p>Walls / Ceilings</p>	Interior Walls / Ceilings / Soffits				
---	-------------------------------------	--	--	--	--

 <p>Fixtures</p>	Cash wraps / Teller counter / ATM	Reception / Closets / Columns	Nurse Station / Cabinets / Closets	Cash Wraps / Walls/design elements	Reception / Columns
---	-----------------------------------	-------------------------------	------------------------------------	------------------------------------	---------------------

 <p>Elevators</p>	Interior of Elevator Cab / Elevator Doors				
--	---	--	--	--	--

 <p>Bathroom Partitions</p>	Doors and Stalls				
--	------------------	--	--	--	--

 <p>Exterior Facades / Entries</p>	ATM / Signage Entrance / Curtain Walls	Entrance / Signage	Entrance / Curtain Walls	Entrance / Signage / Drive-thru / Curtain Walls	Entrance / Curtain Walls
--	---	--------------------	--------------------------	---	--------------------------

Product Selection and Use: Many factors beyond 3M's control and uniquely within user's knowledge and control can affect the use and performance of a 3M product in a particular application. Customer is solely responsible for evaluating the product and determining whether it is appropriate and suitable for customer's application, including conducting a workplace hazard assessment, reviewing all applicable regulations and standards, and reviewing the product label and use instructions. Failure to properly evaluate, select, and use a 3M product in accordance with instructions or to meet all applicable safety regulations may result in injury, sickness, death, and/or harm to property.

Warranty, Limited Remedy, and Disclaimer: Unless a different warranty is specifically stated on the applicable 3M product packaging or product literature (in which case such warranty governs), 3M warrants that each 3M product meets the applicable 3M product specification at the time 3M ships the product. 3M MAKES NO OTHER WARRANTIES OR CONDITIONS, EXPRESS OR IMPLIED, INCLUDING, BUT NOT LIMITED TO, ANY WARRANTY OR CONDITION OF MERCHANTABILITY, FITNESS FOR A PARTICULAR PURPOSE, OR ARISING OUT OF A COURSE OF DEALING, CUSTOM, OR USAGE OF TRADE. If a 3M product does not conform to this warranty, the sole and exclusive remedy is, at 3M's option, replacement of the 3M product or refund of the purchase price.

Limitation of Liability: Except for the limited remedy stated above, and except to the extent prohibited by law, 3M will not be liable for any loss or damage arising from or related to the 3M product, whether direct, indirect, special, incidental, or consequential (including, but not limited to, lost profits or business opportunity), regardless of the legal or equitable theory asserted, including, but not limited to, warranty, contract, negligence, or strict



Commercial Branding + Transportation
3M Center, Building 223-3N
St. Paul MN 55144-1000 USA

Phone: 1-800-328-3908
Web: 3M.com/AMD

© 3M 2025. All rights reserved.
3M and DI-NOC are trademarks of 3M.

Please contact your Area or
Global Application Expert for more details.